

*Vision*  
ENGINEERING

[visioneng.com/magnifiers](http://visioneng.com/magnifiers)



## Industrial Illuminated Magnifiers

- ✓ Designed for industrial applications with perfectly balanced arms
- ✓ Large, high quality optics for comfortable and effective viewing
- ✓ Powerful illumination with excellent controllable light output
- ✓ Energy efficient with the latest LED technology
- ✓ ESD & UV variants available for specialised industry requirements
- ✓ 5 year warranty as standard



[visioneng.com/magnifiers](http://visioneng.com/magnifiers)



## Wave LED / LED ESD / LED UV

### Industrial rectangular lens LED bench magnifier

No knobs to tighten, nothing to adjust. The WAVE LED / LED ESD / LED UV have a flexible, self-balancing shade and hands-free neck assembly which allows the lamp head to be secured in any position. The fully-enclosed neck design is ideal for mechanical, electronics, dental, jewellery and other precision applications.

Wave LED / LED ESD / LED UV offers shadow-free magnification and 3D illumination with selectable left/right light control. Wave LED ESD has been designed for industrial applications where electrostatic discharges can damage electronic components.

### Technical details

**Light source:** 2 x 6W dimmable LED modules. Brightness 4600 lux at 11" (279mm) focal length. 4000°K correlated colour temperature (CCT). 80 colour rendering index (CRI).

**Body material & colour:** WAVE LED steel arm, aluminium head, light grey only. WAVE LED ESD steel arm, aluminium head, black only.

**Mounting:** Edge clamp as standard. Other clamps and mounts available.

**Optics:** 3.5 (1.88x) or 5 (2.25x) diopter, 6.7" x 4.4" (171mm x 114mm) rectangular crown glass lens.

**Secondary lenses:** For additional magnifications a secondary 4-, 6- or 10-diopter STAYS lens can be attached to the primary lens.

**Arm technology & movement:** Heavy duty internal-spring 45" (1143mm) parallel, three-pivot K-arm.

**Timer and dimming:** Step dimming 0-50-100%. Selectable left / right illumination. Auto shut-off function.



Wave LED / LED ESD / LED UV Magnification

Primary lens dioptrre	Secondary lens dioptrre	Total magnification	Focal length
3.5		1.88x	11" (285mm)
3.5	4.0	2.88x	5" (130mm)
3.5	6.0	3.38x	4" (105mm)
3.5	10.0	4.38x	3" (75mm)
5.0		2.25x	8" (200mm)
5.0	4.0	3.25x	4.3" (110mm)
5.0	6.0	3.75x	3.5" (90mm)
5.0	10.0	4.75x	2" (50mm)



## Circus LED

### Large diameter round bench magnifier

No knobs to tighten, nothing to adjust. Circus LED is specially designed to withstand the rigours of everyday use in industrial and manufacturing applications where foreign object debris (FOD) is a concern. Circus LED has a highly flexible, self-balancing head allowing it to be positioned vertically, horizontally and laterally. The fully-enclosed neck and internal spring-balanced arm make the Circus LED ideal for environments where cleanliness is sought.

### Technical details

**Light source:** Circus LED, 10W total energy consumption. Brightness 3830 lux at 11" (279mm) focal length. 4000°K correlated colour temperature (CCT). 90 colour rendition index (CRI).

**Body material & colour:** Steel arm with aluminium head. Fully-enclosed neck design. White with black accents.

**Mounting:** Edge clamp as standard. Other clamps and mounts available.

**Optics:** 3.5 (1.88x) or 5 (2.25x) diopter, 6.5" (165mm) diameter crown glass lens.

**Secondary lenses:** For additional magnifications a secondary 4-, 6- or 10-diopter STAYS lens can be attached to the primary lens.

**Arm technology & movement:** Heavy duty internal-spring 39" (1000mm) parallel, three-pivot arm with 0.75" (19mm) steel tubing. Shade built-in handles for positioning of lamp head.

**Timer and dimming:** Circus LED dimming 10-100%. Auto shut-off function.

Circus LED / Circus Magnification			
Primary lens dioptre	Secondary lens dioptre	Total magnification	Focal length
3.5		1.88x	11" (285mm)
3.5	4.0	2.88x	5" (130mm)
3.5	6.0	3.38x	4" (105mm)
3.5	10.0	4.38x	3" (75mm)
5.0		2.25x	8" (200mm)
5.0	4.0	3.25x	4.3" (110mm)
5.0	6.0	3.75x	3.5" (90mm)
5.0	10.0	4.75x	2" (50mm)



## KFM LED / KFM LED ESD

### Multi-purpose industrial bench magnifier

KFM LED / KFM LED ESD has a robust all-metal construction with sleek design, a flexible arm and excellent light output. It is suitable for all industrial and professional applications.

The flexibility of the joint between the head and the arm makes exact positioning very easy. The quality of the LED illumination allows for virtually shadow-free magnification and excellent colour rendering.

KFM LED ESD is designed to drain away static charges, as they occur, in a controlled manner.

### Technical details

**Light source:** 2 x semi-circular 9W LED modules. Brightness 3000 lux at 13" (330mm) focal length. 4000°K correlated colour temperature (CCT). 80 colour rendition index (CRI).

**Body material & colour:** KFM LED steel arm, aluminium head, light grey only. KFM LED ESD steel arm, aluminium head, black only.

**Mounting:** Edge clamp as standard. Other clamps and mounts available.

**Optics:** 3 (1.75x) or 5 (2.25x) diopter, 5" (127mm) white crown glass lens.

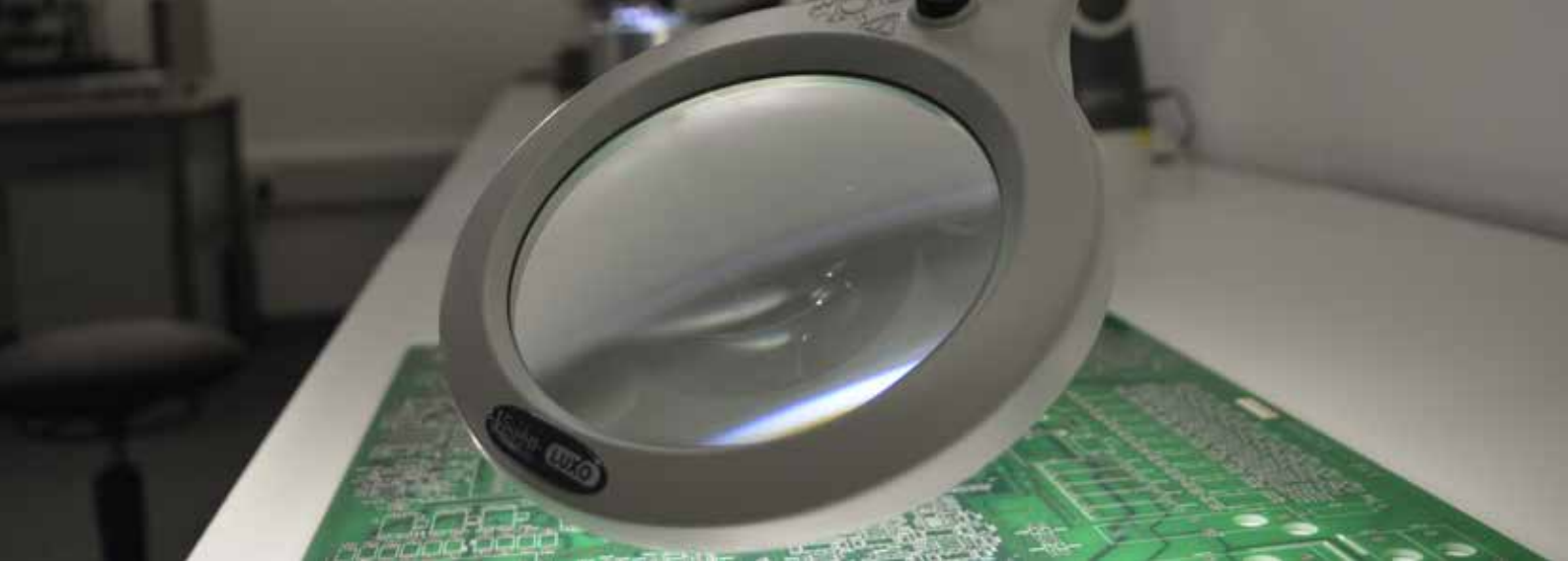
**Secondary lenses:** For additional magnifications a secondary 4-, 6- or 10-dioptre STAYS lens can be attached to the primary lens.

**Arm technology & movement:** Heavy duty internal-spring 45" (1143mm) parallel, three-pivot K-arm.

**Timer and dimming:** The LED light modules are dimmable 1-100%. Auto shut-off function.



KFM LED Magnification			
Primary lens dioptre	Secondary lens dioptre	Total magnification	Focal length
3.0		1.75x	12" (300mm)
3.0	4.0	2.75x	5.5" (140mm)
3.0	6.0	3.25x	4.3" (110mm)
3.0	10.0	4.25x	2.8" (70mm)
5.0		2.25x	8" (200mm)
5.0	4.0	3.25x	4.3" (110mm)
5.0	6.0	3.75x	3.5" (90mm)
5.0	10.0	4.75x	2" (50mm)



## LFM LED G2

### Lightweight illuminated bench magnifier

LFM LED G2 is a lightweight magnifier with an all-metal construction, LED light source and a flexible internal spring-balanced arm. It is suitable for professional and industrial applications where precise magnification is in demand.

LFM LED G2 is supplied with an 5" (127mm) 3 or 5 diopter glass lens. This professional bench magnifier is equipped with a full circle flicker-free illumination allowing for virtually shadow-free viewing.

### Technical details

**Light source:** 9W dimmable LED modules. 4000°K correlated colour temperature (CCT). 80 colour rendition index (CRI).

**Body material & colour:** Die-cast aluminium housing. Available in light grey.

**Mounting:** Edge clamp as standard. Other clamps and mounts available.

**Optics:** 3 (1.75x) or 5 (2.25x) dioptre, 5" (127mm) diameter lens.

**Secondary lenses:** For additional magnifications a secondary 4-, 6- or 10-dioptre STAYS lens can be attached to the primary lens.

**Arm technology & movement:** Heavy-duty internal spring 45° parallel, three-pivot K-arm.

**Timer and dimming:** Step dimming 0-50-100%. Auto shut-off function.

LFM LED G2 Magnification

Primary lens dioptre	Secondary lens dioptre	Total magnification	Focal length
3.0		1.75x	13.0" (330mm)
3.0	4.0	2.75x	5.5" (140mm)
3.0	6.0	3.25x	4.3" (110mm)
3.0	10.0	4.25x	2.8" (70mm)
5.0		2.25x	8" (200mm)
5.0	4.0	3.25x	4.3" (110mm)
5.0	6.0	3.75x	3.5" (90mm)
5.0	10.0	4.75x	2" (50mm)

# Accessories

---

## Brackets



**A-Edge Mount Bracket**



**AH Mount Bracket**



**TE Table Bushing**



**KFM LED Handles**



**Floor Stand (Trolley) With Extra Weight**

---

## STAYS Lenses



### **Self-Traction Accessory Yield System (STAYS)**

STAYS lenses are for use with KFM™ LED, KFM, WAVE® LED, LFM LED, IFM, Circus and Circus LED Magnifiers.

Lens diameter 2" (51mm).

Lens diameter including silicon gasket frame 2.4" (63mm).

# Designed for industrial applications

## Maximum flexibility & perfect balance

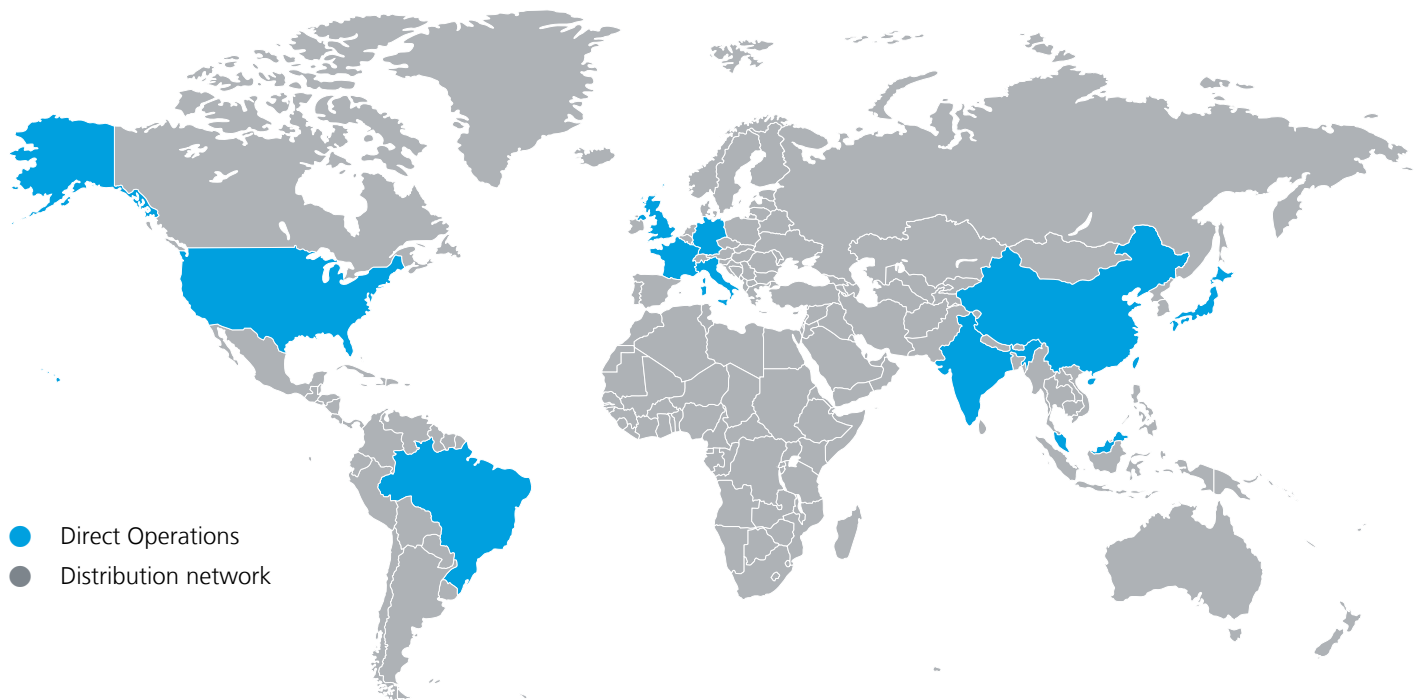
Our bench magnifiers are specially designed for maximum flexibility. They offer a combination of the three all-important head movements; horizontal side-to-side movement (**yaw**), up and down movement (**tilt**) and rotation around a horizontal axis (**roll**). The arms are perfectly balanced by quality spring systems which ensure smooth and easy positioning.



## Ergonomic & energy efficient

Our modern magnifiers are designed to provide the best possible ergonomics, while saving energy using LED technology. All LED magnifiers have a life expectancy of up to 50,000 hours, around 25 years of normal use.

Vision Engineering is a global manufacturer of ergonomic stereo microscopes, digital inspection systems, and optical and video measuring systems.



- Direct Operations
- Distribution network

Since 1958, Vision Engineering has become one of the worlds most innovative and dynamic microscope suppliers.

### For more information...

Vision Engineering has a network of offices and technical distributors around the world. For more information, please contact your Vision Engineering branch, local authorised distributor, or visit our website.

#### Vision Engineering Ltd. (UK Manufacturing & Commercial)

The Freeman Building  
Galileo Drive, Send, Surrey  
GU23 7ER, UK  
Tel: +44 (0) 1483 248300  
Email: generalinfo@visioneng.com

#### Vision Engineering Ltd. (France)

ZAC de la Tremblaie,  
Av. de la Tremblaie  
91220 Le Plessis Paté, France  
Tel: +33 (0) 160 76 60 00  
Email: info@visioneng.fr

#### Vision Engineering (China)

Room 904B, Building B, No.970,  
Nanning Road, Xuhui Vanke Center  
Shanghai, 200235, P.R. China  
Tel: +86 (0) 21 5036 7556  
Email: info@visioneng.com.cn

#### Vision Engineering Inc. (NA Manufacturing & Commercial)

570 Danbury Road,  
New Milford, CT 06776, USA  
Tel: +1 (860) 355 3776  
Email: info@visioneng.com

#### Vision Engineering Ltd. (Italia)

Via G. Paisiello 106  
20092 Cinisello Balsamo MI, Italia  
Tel: +39 02 6129 3518  
Email: info@visioneng.it

#### Vision Engineering (South East Asia)

P-03A-20, Impian Meridian,  
Jalan Subang 1,  
USJ 1, 47600 Subang Jaya,  
Selangor Darul Ehsan, Malaysia  
Tel: +604-619 2622  
Email: info@visioneng.asia

#### Vision Engineering Ltd. (Central Europe)

Anton-Pendele-Str. 3,  
82275 Emmering, Deutschland  
Tel: +49 (0) 8141 40167-0  
Email: info@visioneng.de

#### Nippon Vision Engineering (Japan)

272-2 Saedo-cho, Tsuduki-ku,  
Yokohama-shi, 224-0054, Japan  
Tel: +81 (0) 45 935 1117  
Email: info@visioneng.jp

#### Vision Engineering (India)

Tel: +91 (0) 80-5555-33-60  
Email: info@visioneng.co.in

#### Vision Engineering (Brasil)

Email: info@visioneng.com.br

Distributor



**PBT Rožnov p.R., s.r.o.**  
Lesní 2331  
756 61 Rožnov pod Radhoštěm  
Česká republika

tel.: +420 571 669 311  
e-mail: pbt@pbt.cz  
web: www.pbt.cz



Disclaimer – Vision Engineering Ltd. has a policy of continuous development and reserves the right to change or update, without notice, the design, materials or specification of any products, the information contained within this brochure/datasheet and to discontinue production or distribution of any of the products described.



[www.visioneng.com](http://www.visioneng.com)