

# Depanelist















# DPL-T

Moebius 



**Routing For 2 Kinds of PCB In One Machine!**

## Features & Advantages

-  "NEW CONCEPT" Endless & Unlimited Cutting
-  Zero Loss Time (Transform 1↔2)
-  Ultra High Speed & Independent Dual Z-Axis
-  Selective Use of Single or Dual Spindle
-  The Shortest Cycle Time from Dual Spindle
-  Compact Footprint
-  Ionizer for Easy Removal of Dust
-  User friendly GUI based on IPC & Touch LCD
-  Quick & Easy Programming with Camera & MPG
-  Automatic Bit Positional Correction
-  Quick Model Changeover
-  Safety Sensors for Protecting Operators

## Options

-  Fingerprint Verification & Protocol Management
-  Teaching Data Conversion (CAD/CAM)
-  Network Module Tower Light for LMS or Machine Status Monitoring
-  Vision System for Fiducial, Barcode Reading, NG Mark Recognition
-  Barcode Interlock & MES Interface
-  Edge Detection for Perfect Accuracy
-  Bit Broken & Slip Down Detection
-  Real-Time Monitoring of Spindle RPM
-  Real-Time Self-Diagnosis Dust Collector

# Depanelist

Ultimate PCB Depaneling Router

 **DPL-T**

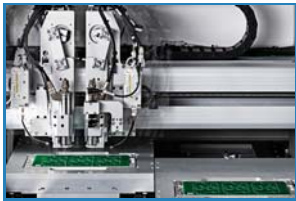
**Moebius** 

Ultra Highest Performance & New Concept Router



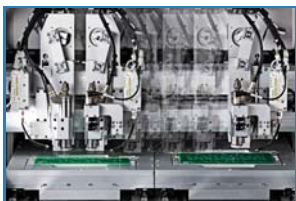
**1 + 1 Mode (Single)**

- Two Single Routers
- Totally Independent Process



**2 X 2 Mode (Dual)**

- Typical Two Head Performance
- Double Speed & Double Volume



**Moebius Mode (Transform)**

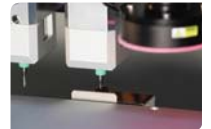
- Endless & Unlimited Cutting
- Zero Loss Time (Transform 1↔2)
- Up to 20~25% Higher Performance (Compared to 2X2 Mode)




 Ultra High Speed & Independent Dual Z-Axis



 Bit Broken & Slip Down Detection



 Fiducial Check & Barcode Read



 Real-Time Spindle RPM Monitoring



 Fingerprint Verification & Protocol Management

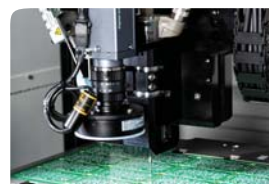


## Specifications

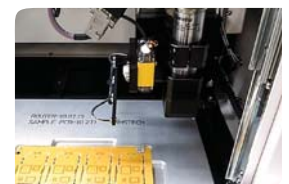
Technical Characteristics	Dimensions	1100 x 1200 x 1500 (WxDxH)
	Weight	Approx. 580kg
	PTP Speed	1,000mm/sec(Max.)
	Cutting Speed	100mm/sec(Max.)
	Cutting Accuracy	±0.1mm
	Repeatability	±0.02mm
	Spindle Motor	2 Spindles
	Motor Specifications	6-Axis AC Servo Motor (X1, X2, Y1, Y2, Z1, Z2)
	Controller	Industrial PC Based Control
	Jig Type	Dedicated Pallet Type
	Program Environment	Windows(GUI) Based on IPC
	Display	TFT LCD 17" Touch Monitor
Installation Requirements	Data Acquisition	Camera with MPG
	Noise Level	70 ± 3 dB
	Dust Collector	5HP, 3 Phase 220V or 380V
PCB Specifications	Power Supply	1 Phase 220V 50/60Hz
	Air Pressure	5.5kg/cm <sup>2</sup> (80PSI)
	Panel Size	Max. 350 x 400 mm
	Thickness	0.4~3.2mm

## Options

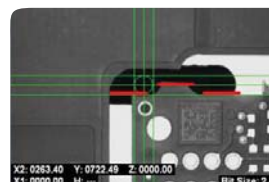
 Vision System



 Barcode Interlock & MES



 Auto Pgm. & Inspection



 CAD/CAM Conversion

