

Guided rework - rework at the highest level for large assemblies.

Technical highlights:

- 1,800 W hybrid high-performance heating element
- Full-surface 6,400 W IR bottom heater
- High-resolution cameras for placement and process monitoring
- Computer-supported component alignment, digital »split optics«
- Ergonomically optimal system operation
- Modern, user-friendly operating software
- Motorized component rotation and X-Y adjustment
- Tip operation with resolution < 20 µm



Ersa Hybrid Rework System HR 550 XL – process large assemblies safely!

The Hybrid Rework System HR 550 XL is for all users who place the highest demands on precision and safety when reworking large assemblies.

The HR 550 XL features a 1,800 W high-performance hybrid heating element that can be used to desolder and solder SMT components up to the size of 70 x 70 mm. The 6,400 W infrared bottom heater with eight zones ensures homogeneous heating of the entire assembly.

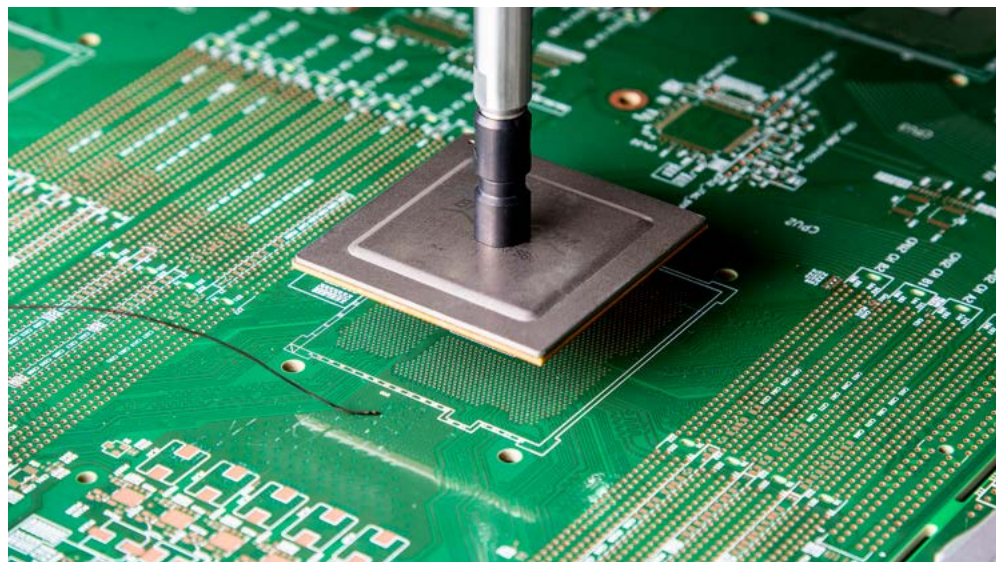
Non-contact and contacting temperature measurement on the component as well as optimized process control guarantee perfect soldering and desoldering processes. Component removal and component placement are carried out via a vacuum pipette that is integrated in the heating head.

The exchangeable heating head and the vacuum pipette are controlled by a stepper motor. An integrated force sensor detects the contact to the component and circuit board.

The motor-adjustable printed circuit board table is particularly useful for the large dimensions of the heating cassette. The component is also turned into the correct position by a motor. The HR 550 XL is prepared for use with the Ersa Dip&Print Station.

The system is managed via the HRSoft 2 operating software and ergonomically arranged operating elements on the device. The connection to the customers MES systems is prepared.

Placement of a metallic BGA.



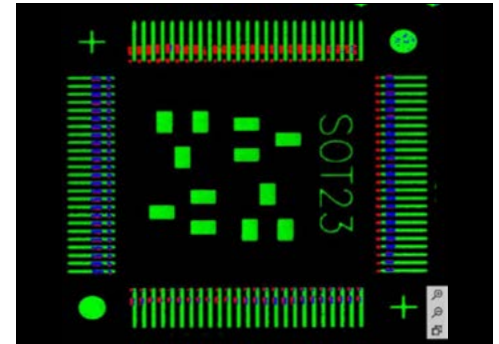
Hybrid Rework System HR 550 XL

Guided rework - rework at the highest level for large assemblies.

| Technical data: | |
|--------------------------------|---|
| Dimensions (W x D x H): | 755 x 930 x 545 / 747 mm |
| Weight | 102 kg including control unit |
| Antistatic version | yes |
| Nominal power | 8.200 W |
| Nonminal voltage | 3 x 400 VAC, 50-60 Hz, 16 A |
| Top heater | Hybrid emitter 900 W infrared + 900 W hot air, 70 x 70 mm |
| Bottom heater | IR emitter (8 x 800 W), 530 x 530 mm |
| Measurement channels | 3 x K-Typ, 1 x IRS |
| Position laser | Class II |
| Board size | up to 530 x 610 mm (+x), 20.9 x 24 inch |
| Component size | from 0,5 x 0,5 mm, 0.02 x 0.02 inch up to 70 x 70 mm, 2.76 x 2.76 inch |
| Working depths | 349 mm |
| Working distance | 30 – 60 mm to top heater, 35 mm to bottom heater |
| Placement camera | 5 MP GigE colour camera, 70 x 70 mm (wide angle), 25 x 33 mm (telephoto) |
| Compressed air supply | 6 – 10 bar (oil-free), ¼ inch quick coupling |
| Cetification mark | CE |
| Operating software | HRSoft 2 – suitable for Windows 8 and Windows 10 |
| Option – Reflow process camera | 2,3 MP, CMOS GigE colour camera, 25 mm focal length, illumination 2 x LED, adjustable |

Order information:

| Order number | description |
|--------------|---|
| OHR550XL | Ersa HR 550 XL Hybrid Rework System |
| OHR510 | RPC Kamera HR 550 |
| OPR100 | Dip&Print Station complete |



Computer aided adjustment of a QFP
green: pads, red: component pins, blue: overlay "best match".



further information on our website



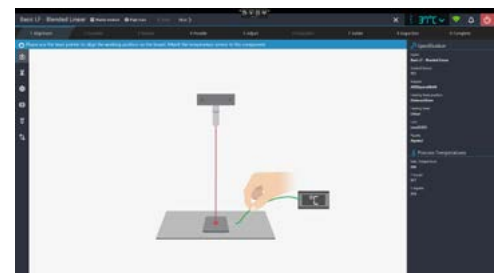
Ersa HR 550 XL Hybrid Rework System – reworking at the highest level.



Optional reflow process camera.



Motorized X-Y adjustment and component rotation.



HRSoft 2 with integrated user guidance.