

PCB Magazines Series 600 / 700

for automated assembly lines



Automation Requires Precision

Precision, stability and flexible handling are important features for the use of the PCB Magazines in automated assembly lines.

The stable and robust frame construction guarantees a long lasting use of the cab magazine in your production.

The rack walls are manufactured from conductive material.

Metal magazine

For high mechanical or temperature use we offer the magazine with metal rack walls.



PCB Magazines Series 600 / 700



Series 600 - Width adjustment by screw clamp

The series 600 is cost effective alternative with a simple width adjustment. By backing off the four screw clamps the moveable rack wall can be pushed to the necessary PCB width.



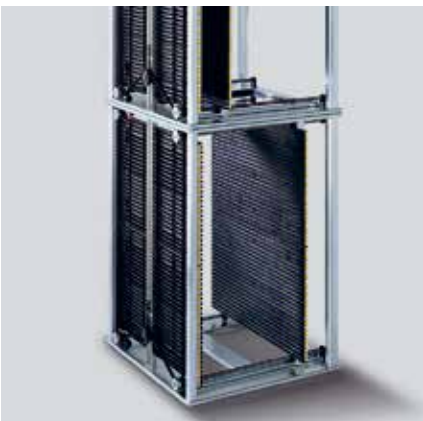
Series 700 - Width adjustment by gear belt

Handling different PCB sizes the magazines have to be adjusted to the PCB width quite often. The PCB Magazines of the series 700 are adjusted to the necessary PCB width within seconds.



Protective cover

Permastat® ESD protective cover, stable and tearproof, protects the PCBs in the magazine from contamination.



Stackable

The magazines can be stacked and secured space saving by four support guides on the top of the plate.



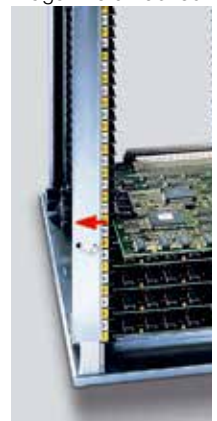
Reversible

Through to the vertical symmetry all magazines can be placed upside down to work on double sided PCBs. The stacking locator knobs must be replaced.

Magazine locked



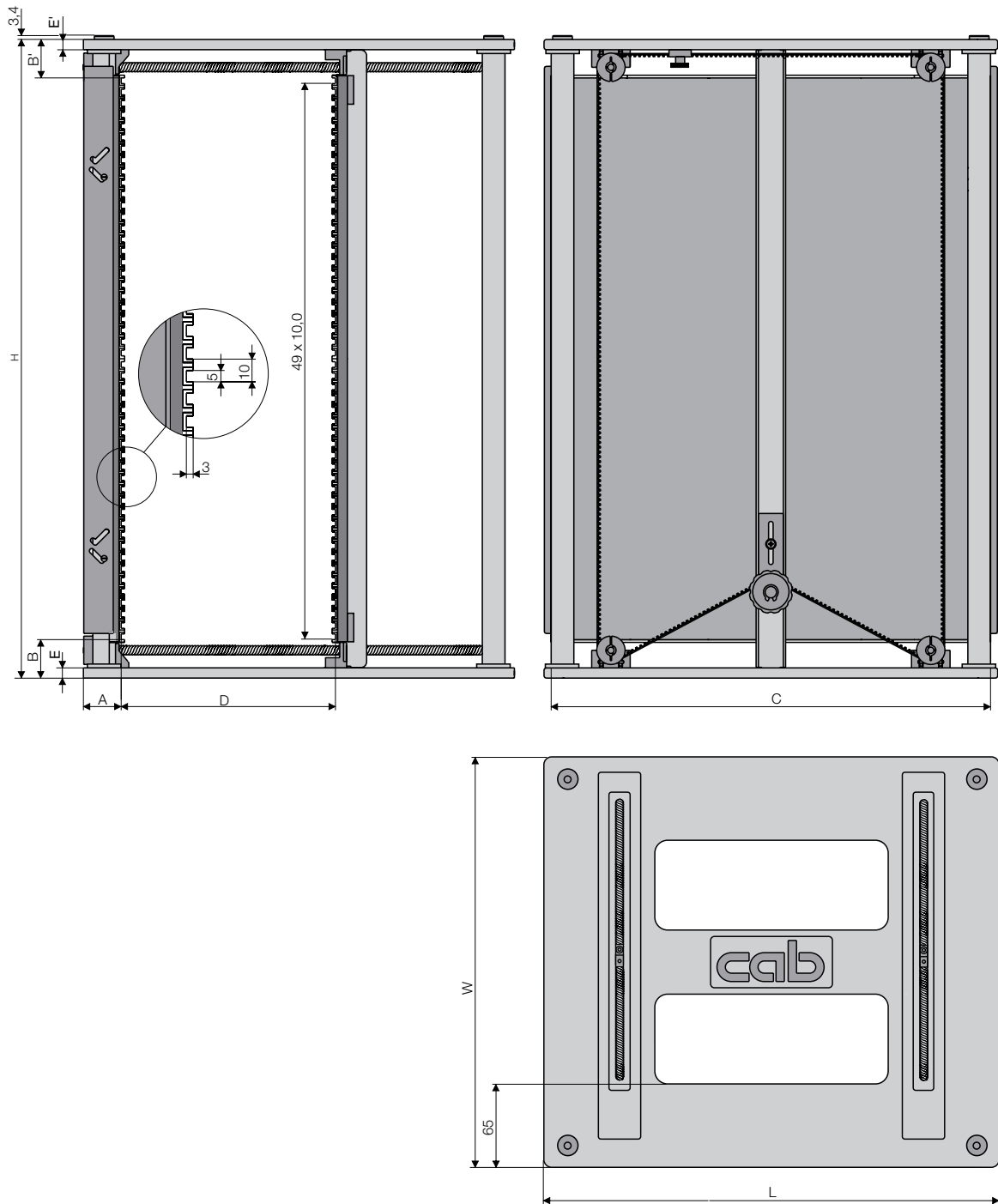
Magazine unlocked



Transport safety

To secure the PCBs while transporting the magazine, a safety bar is mounted on the front and back side of the rack wall.

Technical data





PCB Magazines Series 600 / 700

Delivery program / Dimensions

Type	Part No.	Temperature		Weight kg	PCB						Cover/ basem.		A mm	B mm	B' mm	E mm	E' mm	Pitch mm	Insertions	Screws	Gear belt	Stackable	Reverse operation
		°C Insertions	°C Ambient		External measurements			Width D		Length C max. mm	Dye cast aluminium	Steel sheet											
					L mm	W mm	H mm	min. mm	max. mm														
601.1	8917601	60	50	5,6	355	320	563	40	250	342	■	-	34	34	34	9	9	10	50	■	-	■	■
601.2	8916601	130	100	5,9																			
601.3	8915601	200	200	6,9																			
602.1	8917602	60	50	5,8	400	320	563	40	250	387	■	-	34	34	34	9	9	10	50	■	-	■	■
602.2	8916602	130	100	6,1																			
602.3	8915602	200	200	7,2																			
603.1	8917603	60	50	6,2	400	380	563	40	310	387	■	-	34	34	34	9	9	10	50	■	-	■	■
603.2	8916603	130	100	6,5																			
603.3	8915603	200	200	7,6																			
701.1	8917701	60	50	5,6	355	320	563	40	250	342	■	-	34	34	34	9	9	10	50	-	■	■	■
701.2	8916701	130	80	5,9																			
701.3	8915701	200	100	6,9																			
702.1	8917702	60	50	5,8	400	320	563	40	250	387	■	-	34	34	34	9	9	10	50	-	■	■	■
702.2	8916702	130	80	6,1																			
702.3	8915702	200	100	7,2																			
703.1	8917703	60	50	6,2	400	380	563	40	310	387	■	-	34	34	34	9	9	10	50	-	■	■	■
703.2	8916703	130	80	6,5																			
703.3	8915703	200	100	7,6																			
704.1	8917704	60	50	7,8	460	400	563	10	330	447	-	■	34	34	34	9	9	10	50	-	■	■	■
704.2	8916704	130	80	8,0																			
704.3	8915704	200	100	9,5																			
705.2	8916705	130	80	8,7	535	380	570	10	310	522	-	■	34	41	34	16	9	10	50	-	■	■	-
705.3	8915705	200	100	10,1																			
715.2	8916715	130	80	8,7	535	380	563	10	310	522	-	■	34	34	34	9	9	10	50	-	■	■	■
715.3	8915715	200	100	10,1																			
706.2	8916706	130	80	9,5	535	460	570	10	390	522	-	■	34	41	34	16	9	10	50	-	■	■	-
706.3	8915706	200	100	10,9																			
716.2	8916716	130	80	9,5	535	460	563	10	390	522	-	■	34	34	34	9	9	10	50	-	■	■	■
716.3	8915716	200	100	10,9																			
707.2	8916707	130	80	9,7	535	530	570	10	460	522	-	■	34	34	41	9	16	10	50	-	■	■	-
707.3	8915707	200	100	11,1																			
717.2	8916717	130	80	9,7	535	530	563	10	460	522	-	■	34	34	34	9	9	10	50	-	■	■	■
717.3	8915717	200	100	11,1																			
708.2	8916708	130	80	9,6	535	470	570	10	400	522	-	■	34	41	34	16	9	10	50	-	■	■	-
708.3	8915708	200	100	11,0																			
718.2	8916718	130	80	9,6	535	470	563	10	400	522	-	■	34	34	34	9	9	10	50	-	■	■	■
718.3	8915718	200	100	11,0																			
709.2	8916709	130	80	9,6	535	580	570	10	510	522	-	■	34	41	34	16	9	10	50	-	■	■	-
709.3	8915709	200	100	11,2																			
719.2	8916719	130	80	9,6	535	580	563	10	510	522	-	■	34	34	34	9	9	10	50	-	■	■	■
719.3	8915719	200	100	11,2																			

The PCB-magazines xxx.1 and xxx.2 are delivered partially assembled. Assembled magazines can be ordered with additional article numbers. All metal magazines are delivered assembled: 60X.3-series reversible version, 70X.3-series stackable version.

	DL31001	Assembled with staple nepps
	DL 31002	Assembled for reserve operation

Series		Material side wall	Surface resistance
60x.1	70x.1	Polystyrene	as per DIN EN
60x.2	70x.2	Polycarbonate	61340-5-1
60x.3	70x.3	Metal*	< 10 ⁹
ESD Protection cover Permatst conductive discharge			

*Measured from rack wall to frame

ESD Protection cover

Color: pink, Thickness: 150 µm (PU = 10 pcs.)

Type	Part No.
601/701	8916411
602/702	8916412
603/703	8916413
704	8916414
706/716	8916416
707/717	8916417

Protection cover also for other models on request.



Special magazines

cab supplies special magazines on request for specific applications. Please contact us.



Twin magazine for long PCBs

The PCB magazines are mounted with torsion resistance so that you can, for example, safely store and transport PCBs with a length of up to 787 mm in two PCB magazines of type 702.2-2.

Rack wall material: polycarbonate.

Delivery: fully assembled.

Type	Part No.	Temperature			External measurements			PCB		
		°C Insertions	°C Ambient	Weight kg	L mm	W mm	H mm	Width D		Length C
								min. mm	max. mm	max. mm
701.2-2	8916712	130	100	12,3	710	320	563	40	250	697
702.2-2	8916722	130	100	12,7	800	320	563	40	250	787
703.2-2	8916732	130	100	13,5	800	380	563	40	310	787



Triple magazine for long PCBs

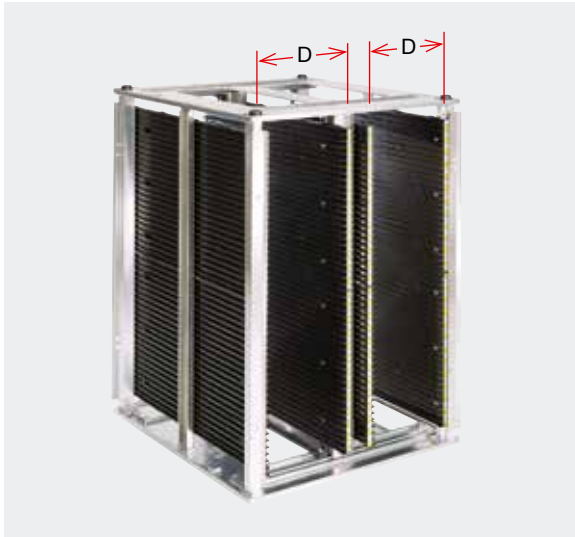
The PCB magazines are mounted with torsion resistance so that you can, for example, safely store and transport PCBs with a length of up to 1187 mm in three PCB magazines of type 702.2-3.

Rack wall material: polycarbonate.

Delivery: fully assembled.

Type	Part No.	Temperature			External measurements			PCB		
		°C Insertions	°C Ambient	Weight kg	L mm	W mm	H mm	Width D		Length C
								min. mm	max. mm	max. mm
701.2-3	8916713	130	100	18,7	1065	320	563	40	250	1052
702.2-3	8916723	130	100	19,3	1200	320	563	40	250	1187
703.2-3	8916733	130	100	20,5	1200	380	563	40	310	1187

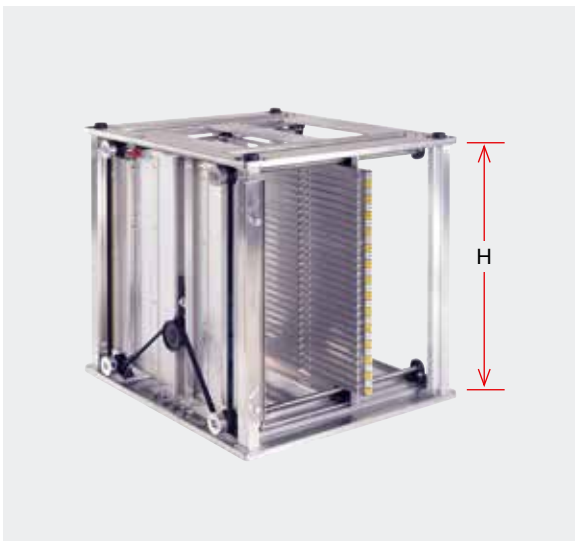
Special magazines



Double capacity through parallel slide-in units

A series 600 magazine can hold up to 100 PCBs. PCB magazines with 2 side-by-side slide-in units can be used for holding narrow PCBs. Rack wall material: polystyrene, polycarbonate, metal.

Type	Part No.	Temperature			PCB					
		°C Insertions	°C Ambient	Weight	External measurements			Width D		Length C
					L mm	W mm	H mm	min. mm	max. mm	max. mm
601.1-P	8916435	60	50	355	320	563	40	100	342	
601.2-P	8915485	130	100	355	320	563	40	100	342	
603.2-P	8916425	130	100	400	380	563	40	130	387	
603.3-P	8916395	200	200	400	380	563	40	130	387	

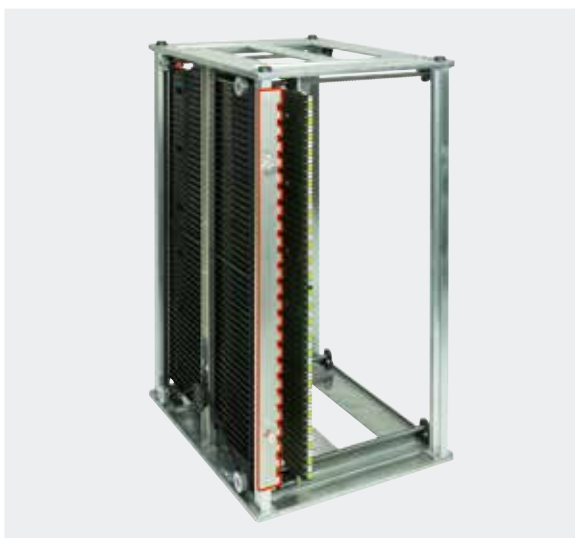


Low height

PCB magazines with a low height, for example, for use in annealing furnaces. Reducing the height also prevents overloading with heavy PCBs, or if goods holders are used.

Rack wall material: metal.


Type	Part No.	Temperature			Weight kg	External measurements			Insertions	Screws	Gear belt
		°C Insertions	°C Ambient	Insertions		L mm	W mm	H mm			
701.3	8916410	200	100	5,9	355	320	263	20	-	■	
701.3	8916175	200	100	6,1	355	320	343	28	-	■	



Slide-in lock

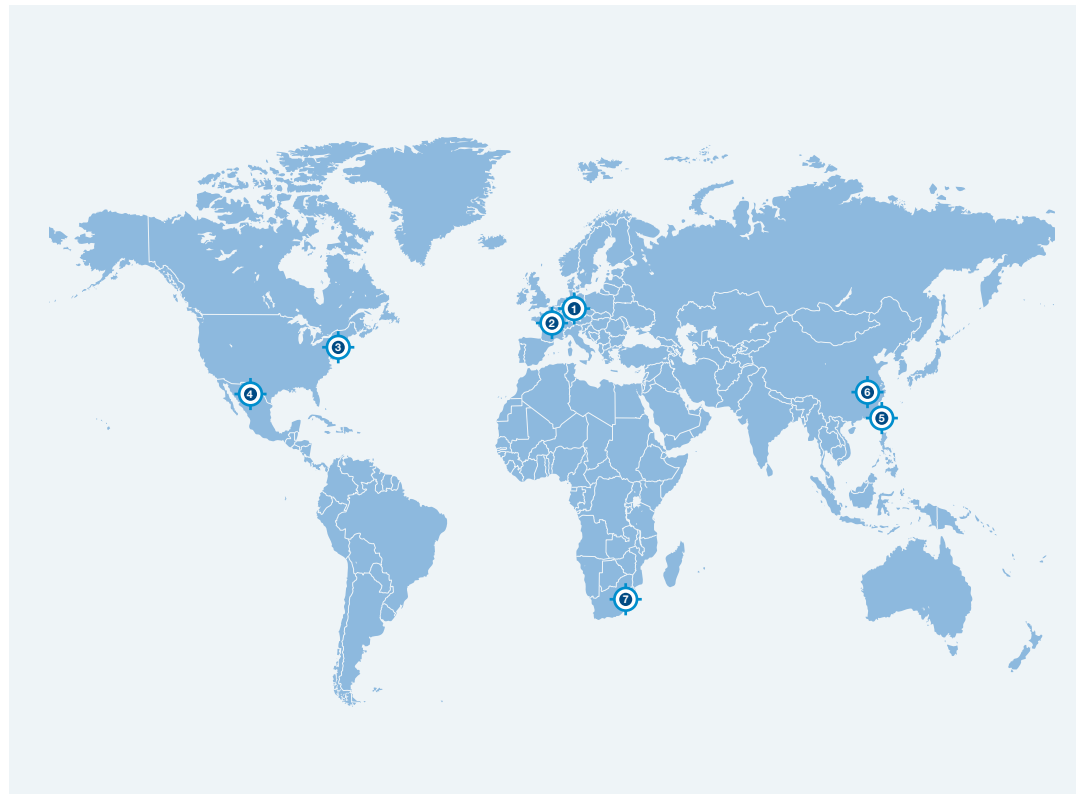
Lock the slide-in units to prevent components being damaged during loading. In the example, every 2nd slide-in unit can be loaded (separation 20 mm = 25 slide-in units). Other means of masking off can also be used.

Part No.	Pitch	Insertions
8915791.001	40 mm	12
8916471.001	30 mm	16
8915792.001	20 mm	25

 Headquarter and fabrication
in Germany

 to  International
subsidiaries

There are furthermore 820
distribution partners in more
than 80 countries.



Europe

Germany

cab Produkttechnik
GmbH & Co KG
Wilhelm-Schickard-Str. 14
76131 Karlsruhe
phone +49 721 6626 0
fax +49 721 6626 129
info@cab.de
www.cab.de

France

cab Technologies S.à.r.l.
2a Rue de la Moder
Z.A. Nord du Val de Moder
67350 Niedermodern
phone +33 388 722501
fax +33 388 722502
info.fr@cab.de
www.cab.de/fr

America

USA

cab Technology, Inc.
87 Progress Avenue Unit 1
Tyngsboro, MA 01879
phone +1 978 649 0293
fax +1 978 649 0294
info.us@cab.de
www.cab.de/us

Latin America

Alejandro Balmaceda
Hacienda Jurica Pte 1615
Colonial de Valle
32553 Juárez, Mexico
phone +52 656 682 4301
a.balmaceda@cab.de
www.cab.de/es

Asia

Taiwan

cab Technology Co., Ltd.
希愛比科技股份有限公司
16F-1, No. 700, Jhong Jheng Rd
Junghe, Taipei 23552
phone +886 (02) 8227 3966
fax +886 (02) 8227 3566
info.asia@cab.de
www.cab.de/tw

China

cab (Shanghai) Trading Co., Ltd.
铠博(上海)贸易有限公司
A507, No. 268, Tong Xie Rd
Shanghai 200335
phone +86 (021) 6236 3161
fax +86 (021) 6236 3162
info.cn@cab.de
www.cab.de/cn

cab (Shanghai) Trading Co., Ltd.
铠博(上海)贸易有限公司
Room 39, 10F, 8 Lin He Zhong Rd
Tian He District, Guangzhou 510610
phone +86 (020) 2831 7358
info.cn@cab.de
www.cab.de/cn

Africa

South Africa

cab Technology (Pty) Ltd.
14 Republic Street
Bordeaux
2125 Randburg
phone +27 11 886 3580
fax +27 11 789 3913
info.za@cab.de
www.cab.de/za