



**RELENTLESS STRONG
PICK-AND-PLACE**

Strong, Flexible, Adaptive & Modular

naturally adaptive.



puma.

RELENTLESS PLACING AND JET DISPENSING

Introducing – The Puma Technology – for all types of components and devices. Expandable in any direction.



LINE SOLUTION

CELL SOLUTION

combined process.

- Highspeed Placement and Jet-Dispensing
- 2 or 4 placement-axes and 1-2 dispense processes

productivity.

- Optimum 18'100 cph, up to 54'300 cph inline
- Optimum 145'000 dots/h (with Piezo Jet Valve)

small footprint.

- Up to 280 Feeder on 2 m² (480 inline - 3 modules)
- PCB size 560 x 610 mm, optional 1'800 x 610 mm

mineral cast chassis.

- No vibration, symmetrical mineral casting
- No warpage, no thermal drift

quick changeover.

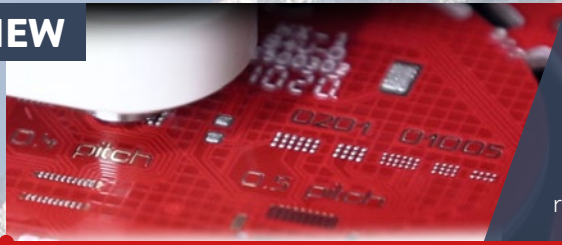
- Nonstop production, Smart electronic feeder
- Nonstop feeder and production changeover

linear motors.

- Fast, reliable double drive linear motors
- No maintenance, longest lifetime

naturally adaptive.

NEW



solder paste jet printing

Dynamic Shockwave Technology. Adaptable for different jettable pastes (T₄₋₇). Adaptable for special applications (nozzle, tappet, temperature etc.). Optional needles for deep cavities.

A WORLD OF BENEFITS FROM NPI TO HIGH FLEX, HIGH SPEED PRODUCTION



Configurable heads with 1-4 placement-axis. 2,5D and 3D dispensing and jetting. High resolution digital Cognex vision system with auto component teach-in and irregular ball recognition.



Full operator support - Automated error analysis & KPI. Training, support and troubleshooting via advanced remote access. Investment protection; all options and heads retrofittable. Machine expansion in any direction.



Multi flexible feeder, multi lane cassette or highly accurate single lane feeder. Tape, Stick, Strip, Palettes and Tray slider. Largest component spectrum; 008004 (imp.) up to 80 x 80 mm, component height up to 25 mm.



MULTITALENT SOFTWARE AT YOUR FINGERTIPS State of the art, full graphics, 21.5" 16:9 touch screen, Windows – 64 bit, fingertip operation, real time visualization, zoom at camera windows, all-in-one job planning, universal CAD conversion, setup optimization, stock management, ERP/MES connection, data analysis, line management, traceability down to single component and more.

optional

Laser Height Measurement Compensation of PCB warpage

Dispensing and Jetting Vacuum cleaning station for nozzles and tips

Tray Slider Unique system to increase the amount of trays

Increase Boardsize Table extension to increase the processable board size

Additional: Electrical component test system, vision box to increase component size to be placed, reel-to-reel, bulk components and more



naturally adaptive.



		puma.	puma ²	puma ⁴
Productivity	Optimum placement speed	6'700 cph (1-axis)	11'200 cph (2-axes)	18'100 BE/h (4-axes)
	Optimum jetting speed	up to 145'000 dots/h		
Feeder	Feeder capacity 8 mm tape	260 (140 inline)	260 (140 inline)	280 (160 inline)
Components	Component size range	008004 (imp.) - 80 x 80 mm (Note specs for constraints)		
Accuracy	Placement accuracy (x, y)	Chip ± 40 µm (3σ) / QFP ± 30 µm (3σ)		
PCB	Max. PCB dimensions	560 x 610 mm (22 x 24"), optional 1'800 x 610 mm (71 x 24")		
Dimensions	Machine footprint	1'557 x 1'357 mm (61 x 53")		



**OUR FOCUS - YOUR SOLUTION
SMART SMT EQUIPMENT**

Wildlife consistently shows us with breathtaking flexibility how nature can adapt itself to the many different demands of its environment; that is what inspires us! Essemtec AG is a privately owned company with its development and production site in Switzerland. The product portfolio comprises of production equipment for electronic assembly and more. Our high tech solutions can be adjusted quickly and easily to meet wide ranging requirements; we are therefore able to respond to all manner of customer requests. That's why "naturally adaptive" is our motto across all ranges.

Disclaimer & Copyright:

Information in this brochure is for general information purpose only. Further details are provided in the specification sheet. All materials contained in this brochure are copyright © Essemtec AG, Switzerland, March 2023.

**Switzerland
Essemtec AG**

Mosenstrasse 20
CH-6287 Aesch/LU
Tel: +41 41 919 60 60
info@essemtec.com

**Germany
Essemtec GmbH**

Oskar-Messter-Strasse 25
DE-85737 Ismaning
Tel: +49 893 803 55 15
info@essemtec.com

**France
Essemtec SAS**

50, Avenue d'Alsace
FR-68000 Colmar
Tel: +49 172 287 56 04
info@essemtec.com

**America
Essemtec USA LLC**

300 5th Ave, Suite 1010
Waltham, MA 02451
Tel: +1 856 218 11 31
sales-usa@essemtec.com

